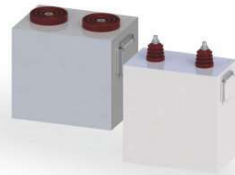


Features & Applications

- Metal housing with fully sealed, dry type.
- High-temperature resistant metallized PP film as dielectric.
- Self-healing, long service life, high reliability and able to withstand the impacting of instantaneous high current.
- Applicable to pulse power system's energy storage, strong magnetic field, LC oscillation circuit and other occasions.



Technical Parameter

Norms Reference	JB/T 8168-1999
Working Temperature	-25°C ~ +40°C
Storage Temperature	-25°C ~ +40°C
Rated Voltage	2kVdc ~ 50kVdc
Range Of Capacitance	2 μF ~ 8000 μF
Allowable Capacitance Deviation	± 5%(J), ± 10%(K)
Voltage Test Between Terminals	1.1-1.5U _N (10s, 25°C ± 5°C)
Voltage Test Between Terminals And Case	(√2U _N +1000)Vac (10s, 50/60Hz, 25°C ± 5°C)

Dissipation Factor	≤ 2.0 × 10 ⁻³ (100Hz, 25°C ± 5°C)
Maximum Application Altitude	2000m
Maximum Terminal Torque	8Nm12Nm16Nm
Loss Of Efficiency	50FIT
Insulation Resistance	≥ 5000s(20°C, 100Vdc, 60s)
Electrode Terminal	M10*35M12*40M16*40
Expected Service Life	1000-10 0000次

Common Specification

U _N (kVdc)	C (μF)	I (kA)	V _m (%)	L _r (n)	P _w (J/cm ³)	LXWXH (mm)	W (kg)	Part Number
3	200	3.5	30	1 × 10 ³	0.23	260 × 70 × 220	4	MKMJ3022006***
5.5	1000	10	30	1 × 10 ³	0.41	415 × 140 × 640	35	MKMJ5521007***
6	200	1	100	1 × 10 ³	0.48	406 × 305 × 725	85	MKMJ6022006***
10	100	4	80	1 × 10 ³	0.15	383 × 145 × 600	32	MKMJ1031006***
10	500	30	20	1 × 10 ³	1.63	278 × 187 × 295	20	MKMJ1035006**2
18	165	5	20	1 × 10 ³	0.45	385 × 260 × 590	55	MKMJ1831656***
20	70	10	20	5 × 10 ⁴	0.53	405 × 205 × 320	26	MKMJ2037005***
20	200	8	10	5 × 10 ⁴	0.47	420 × 260 × 780	88	MKMJ2032006***
25	20	2	10	1 × 10 ⁴	0.42	305 × 140 × 350	15	MKMJ2532005***
25	65	8	10	1 × 10 ⁴	0.98	320 × 135 × 480	20	MKMJ2536505***
25	110	10	10	1 × 10 ⁴	0.52	429 × 258 × 595	60	MKMJ2531106***
25	160	12	30	5 × 10 ⁴	0.54	510 × 260 × 700	85	MKMJ2531606***
30	130	13	10	2 × 10 ⁴	0.8	420 × 258 × 670	66	MKMJ3031306***
35	305	35	10	2 × 10 ⁴	0.82	515 × 480 × 920	210	MKMJ3533056***
50	20	8	10	2 × 10 ⁴	0.8	355 × 128 × 685	35	MKMJ5032005***

REMARKS

- 1, The listed dimension on the above chart is our common specifications, we can produce as customer's requests.
- 2, The datas are subject to change without notice.
- 3, The certificate marks can be printed on the product as customer's requests.

Features & Applications

- Insulated housing, dry type.
- High-temperature resistant metallized PP film as dielectric.
- Self-healing, long service life, high reliability and able to withstand the impacting of instantaneous high current
- Applicable for impulse voltage generator and other occasions.



Technical Parameter

Norms Reference	JB/T 8168-1999
Working Temperature	-25°C ~ +40°C
Storage Temperature	-25°C ~ +40°C
Rated Voltage	50kVdc ~ 100kVdc
Range Of Capacitance	0.1μF ~ 3μF
Allowable Capacitance Deviation	± 5% (J)
Voltage Test Between Terminals	1.3-1.5U _N (10s, 25°C ± 5°C)

Dissipation Factor	≤ 2.0 × 10 ⁻³ (100Hz, 25°C ± 5°C)
Maximum Application Altitude	2000m
Loss Of Efficiency	100FIT
Insulation Resistance	≥ 5000s(20°C, 100Vdc, 60s)
Expected Service Life	2000-10 0000次

Common Specification

U _N (kVdc)	C (μF)	L (mm)	T (mm)	H (mm)	Part Number
50	1	500	110	270	MMJ5031004***
50	2	550	175	270	MMJ5032004***
100	0.5	580	70	370	MMJ1045003**1
100	0.5	700	70	265	MMJ1045003**2
100	0.875	580	125	330	MMJ1048753***
100	1	580	120	370	MMJ1041004**1
100	1	700	115	265	MMJ1041004**2
100	1.5	700	140	330	MMJ1041504***
100	2	580	140	390	MMJ1042004***

REMARKS

- 1, The listed dimension on the above chart is our common specifications, we can produce as customer's requests.
- 2, The datas are subject to change without notice.
- 3, The certificate marks can be printed on the product as customer's requests.